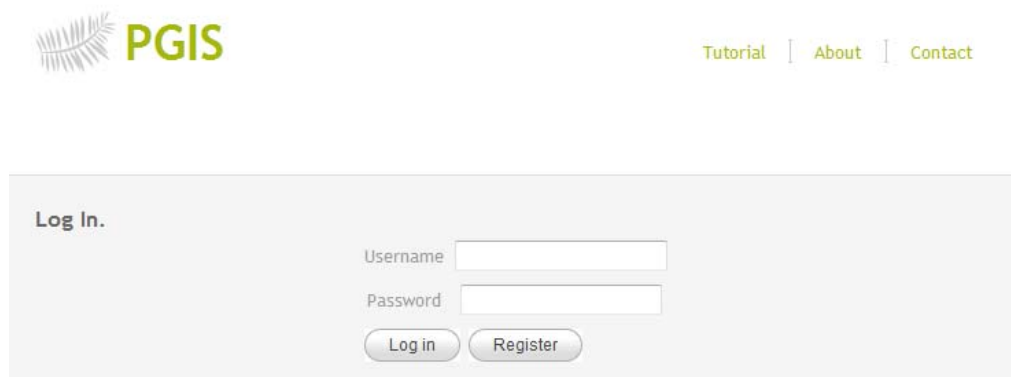


# Tutorial for PGIS in Accra, Ghana

*Chung-Rui Lee, Ick Hoi Kim<sup>1</sup>, and Jayesh Patel<sup>2</sup>*

Welcome to PGIS in Accra, Ghana web mapping service. This website is funded by NCIH Grant # 1 R01 HD054906-01. In this tutorial, we will introduce how to create a discourse and attach files (photos or kml files) with the discourse. Please be aware that your discussion will be recorded for academic analysis purpose. If you have and concern or suggestion, please contact Mr. Chung-Rui Lee at [lee13@rohan.sdsu.edu](mailto:lee13@rohan.sdsu.edu).

## Log in



PGIS

Tutorial | About | Contact

Log In.

Username

Password

Log in Register

You have to log in to our secured server in order to access the mapping and discuss functions. Please contact the project team members for your username and password.

## Home (Index page)

The index page provides a brief introduction about this project. Most important of all, you can find the contact method of the webmaster. If you have any technical difficulties or concerns please don't be hesitated to ask for assistance. We are trying to provide you a friendly use environment.

---

<sup>1</sup> Dept of Geography, San Diego State University

<sup>2</sup> Dept of Computer Science, San Diego State University

Akawaaba!



**SAN DIEGO STATE  
UNIVERSITY**

PGIS in Accra, Ghana is built by Chung-Rui Lee, Jayesh Patel, and Ick Hoi Kim at San Diego State University. Please be aware that your discussion will be RECORDED for academic analysis purpose. If you have any question or concern about this, please contact Mr. [Chung-Rui Lee](#). Thank you.

[Learn more about the Ghana project](#)

#### News

##### Welcome

Welcome to use the PGIS service to share information about Accra, Ghana.

[Learn more about the research team](#)

Contact the webmaster

#### Notes

Technical difficulties? Contact the [Webmaster](#).

## Discourse (Discussions and files uploading)

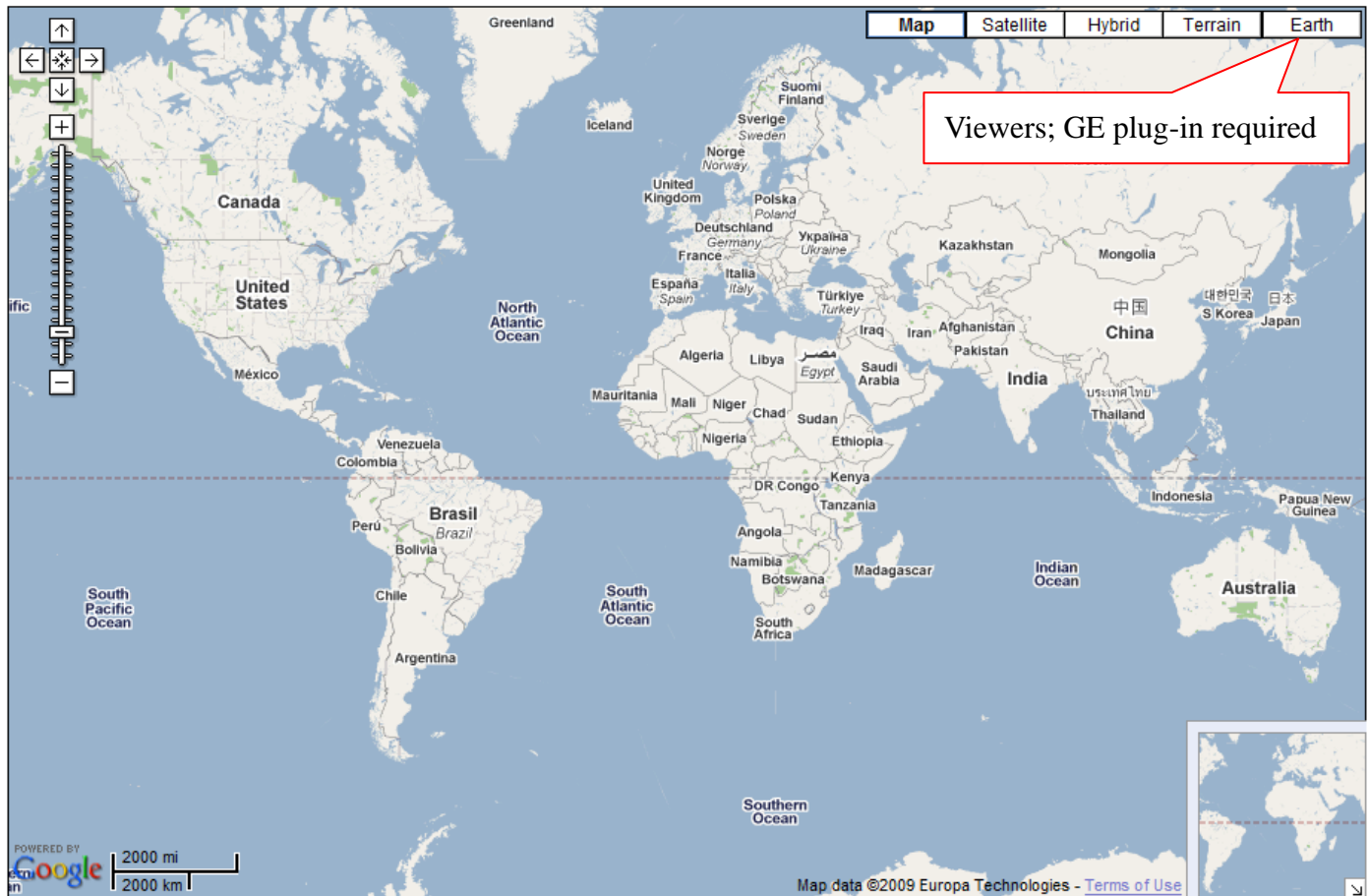
Discourse is our major service. The steps for creating a discourse are: 1. Find the location; 2. Fill out the information. 3. Attach a file. 4. Confirm. 5. Double check.

### 1. Find the location:

You can locate your point of interest from the search bar by using Accra, or (5.55, -0.2166667) , ( 5° 33' 0" N, 0° 13' 0" W) , (5 degrees, 33 minutes, 0 seconds North, 0 degrees, 13 minutes, 0 seconds West).

Or you can just simply zoom in and pan to your point of interest, and then double click the map. A window will pop up for you to insert the data.

\* We provide Map, Satellite, Hybrid, Terrain, and Earth viewers (Google Earth Plug-In required. You can download it at <http://code.google.com/intl/en/apis/earth/>) to help you find your point of interest.



Type in Address or  
Latitude, Longitude

Key in **address** or **absolute location**

### Notes

This Web site uses the Google Maps API and Google Earth API. In order to use the Google Earth API, you should be able to install the Google Earth Plug-In in your computer ([Click here to download the Google Earth Plug-In](#)).

### BASECAMP

Project member please go to [BASECAMP](#) for latest project developments.

Link to BASECAMP

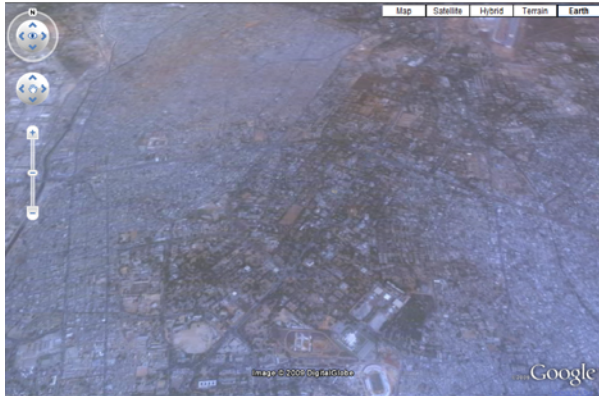
### Technical Support

Interested in creating your own map layer? You can find how to generate them from following URLs. Enjoy!

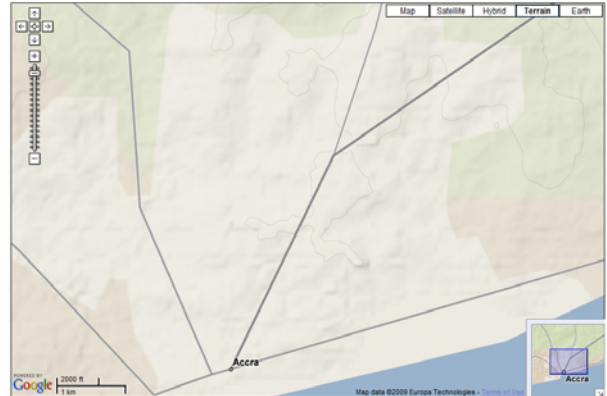
What is KML? Visit [Google KML](#) to visit Google

How to generate KML/KMZ files

## Viewers at a glance



Earth view



Terrain view



Satellite view



Hybrid view



Map view

\* If you want to know how do Google make the map of Accra, click <http://www.google.com/mapmaker>

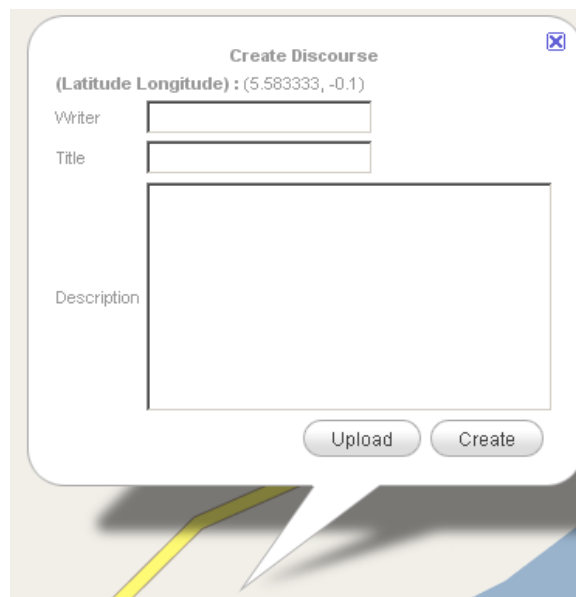
## 2. Fill out the information.

How do I get the information window to fill out my observation? Take it easy, you can get it through three different ways: **a) directly double click a point on the map; b) search by address in the address locator; c) put in the latitude and longitude of that place.** So if the server is not crash, you did pay your utility bill, or there is no alien invasion, an information window will pop out in your face.

Fill out your name for writer: for example, Ray.

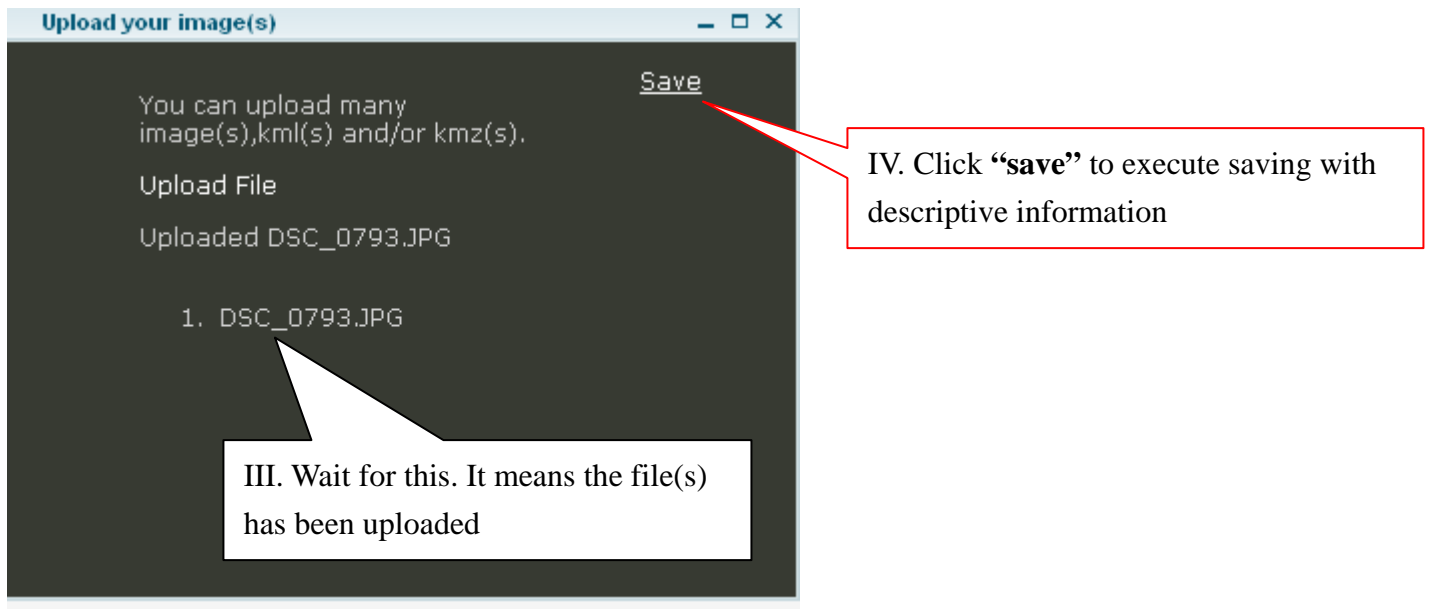
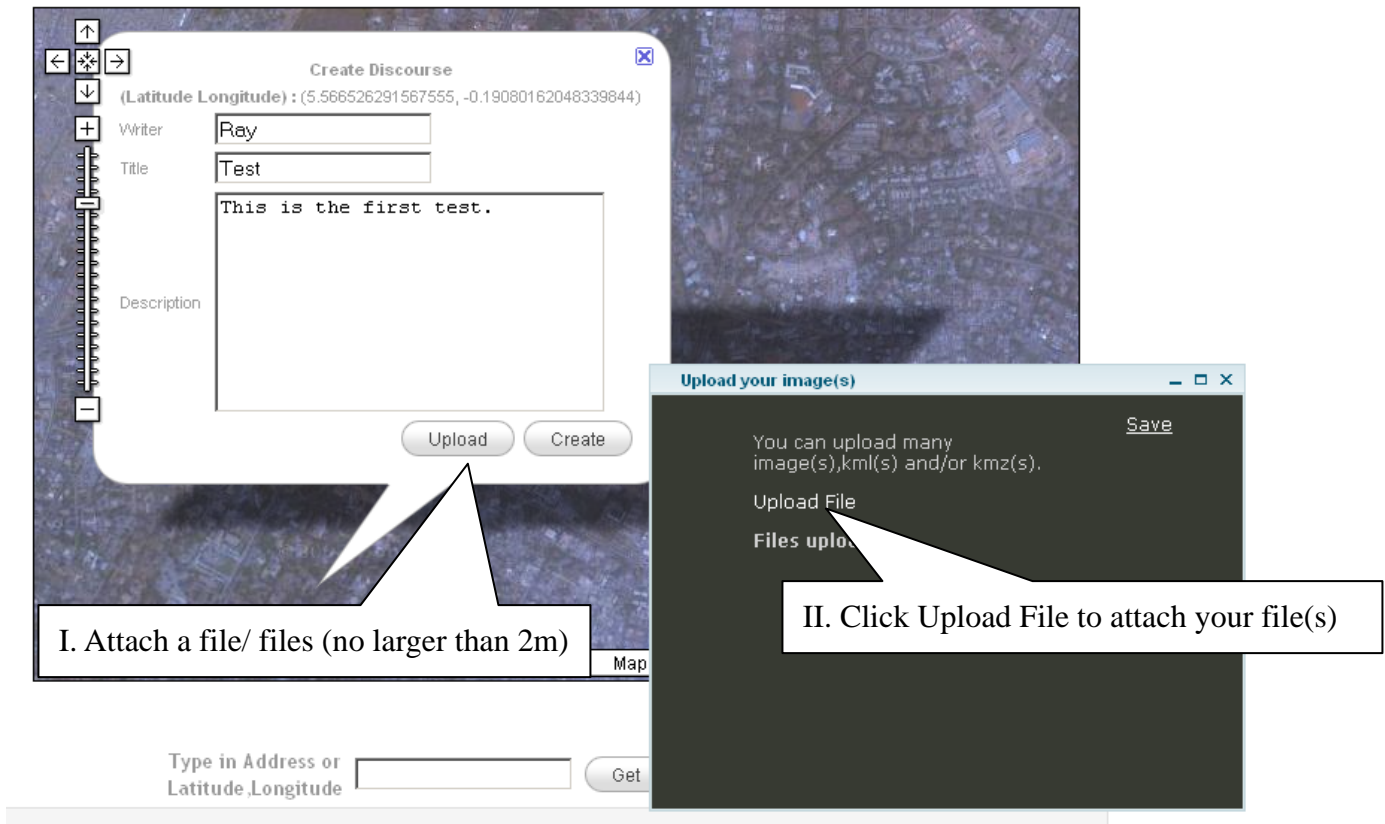
Fill out how do you want this topic to be called: for example, Tutorial.

Fill out your discussion/ observation as description for that place.

A screenshot of a web application dialog box titled "Create Discourse". The dialog box is white with a thin border and a close button (X) in the top right corner. It contains the following elements: a label "(Latitude Longitude) : (5.583333, -0.1)" in bold; a "Writer" label followed by a text input field; a "Title" label followed by a text input field; a "Description" label followed by a large text area; and two buttons at the bottom, "Upload" and "Create". The dialog box is overlaid on a map background showing a yellow road and a blue area.

## 3. Attach a file.

Click the "Upload" button, and then a new window will pop up for you to attach picture(s) or/ and kml/kmz file(s).



**You can upload photos with kmz/kml files. However, every file has to be smaller than size of 2m bit.**



#### 4. Confirm.

WITHOUT Click Create all the information WILL NOT be saved in the database. Please make sure you click Create button after you fill out the information.

**Create Discourse**

(Latitude Longitude) : (5.566782569306497, -0.1858234405517578)

Writer:

Title:

Description:

#### 5. Double check.

Go to History page to see if your discourse has been successfully saved in our database.

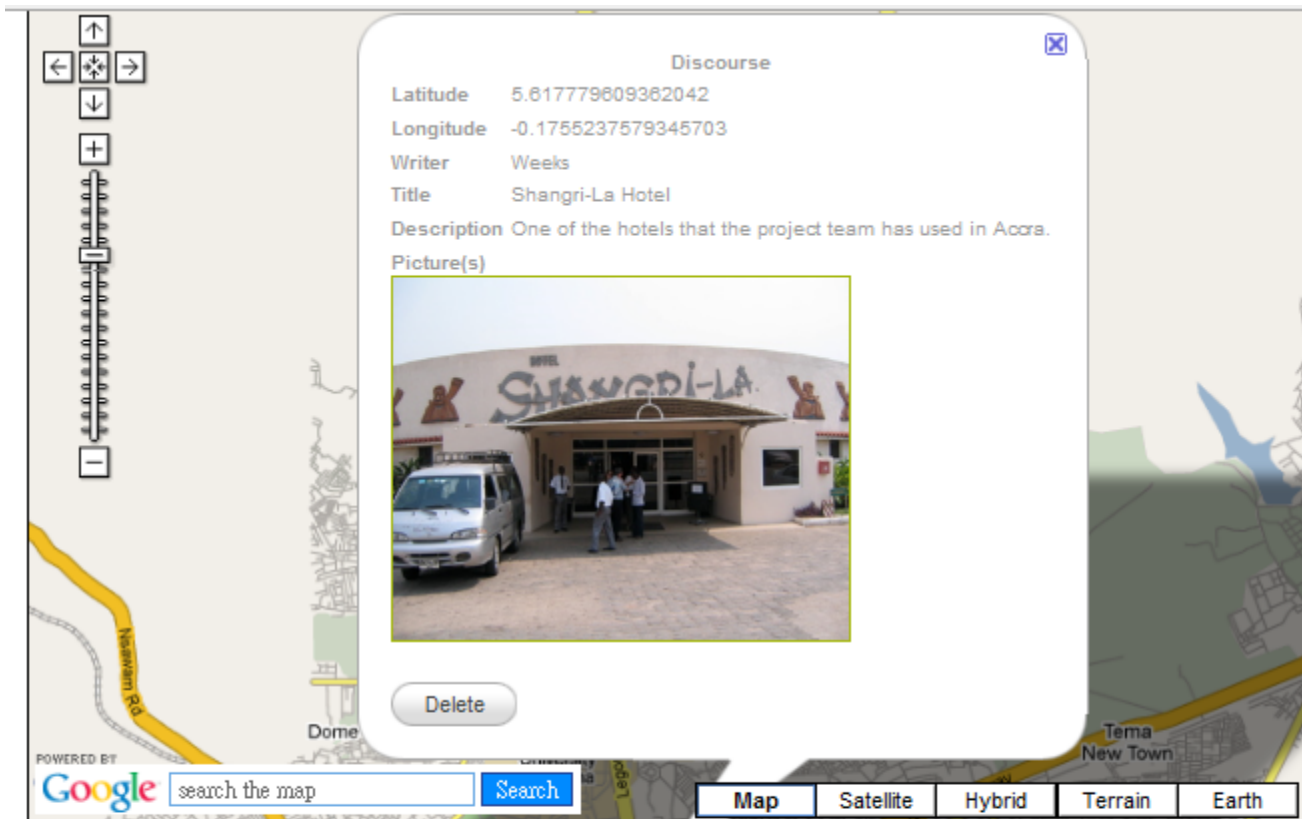
### History (List of all discourses)

This page will display ALL the records in our database. It has the writer, title, description, and created time. If you would like to know where the location is, just click **Map It**. The information window will pop up with latitude, longitude, and attached files. Click the photo(s), and it will open in its original format in a new tab.

#### History

Writer	Title	Description	Time	Map it
Ray	Picture of Osu	This is a street view of Osu	6/1/2009 8:27:14 AM	<a href="#">Map It</a>
Ray	Localities in Accra	This is the kml file of the locality	6/1/2009 8:41:18 AM	<a href="#">Map It</a>
Ray	Slum index of Accra	This is a testing page for the kml	6/1/2009 9:08:16 AM	<a href="#">Map It</a>

## Example of a discourse



## History

Writer	Title	Description	Time	Map it
Ray	Picture of Osu	This is a street view of Osu	6/1/2009 8:27:14 AM	<a href="#">Map It</a>
Ray	Localities in Accra	This is the kml file of the locality	6/1/2009 8:41:18 AM	<a href="#">Map It</a>
Ray	Slum index of Accra	This is a testing page for the kml	6/1/2009 9:08:16 AM	<a href="#">Map It</a>
Weeks	Shangri-La Hotel	One of the places the project team has used in Accra	5/17/2009 1:51:52 PM	<a href="#">Map It</a>

Because we will have many records display on one page in the future. Click Go to Map. And it will take you back to the map part (next page).



**Notes**  
[Go to Map](#)  
 This Web site uses the Google Maps API and Google Earth API. In order to use the Google Earth API, you should be able to install the Google Earth Plug-In in your computer ([Click here to download the Google Earth Plug-In](#)).

**Display KML/KMZ Files**  
 Please go to [here](#) to browse kml/kmz file.

**Download Files**  
 Click [here](#) to access all the pictures and kml files.

**Download Google Earth**  
 For detail information of each kml/kmz file. We recommend you to install Google Earth. [Get it now](#).

You can download kml/ kmz files and pictures from our server at here.

## View KML/KMZ files

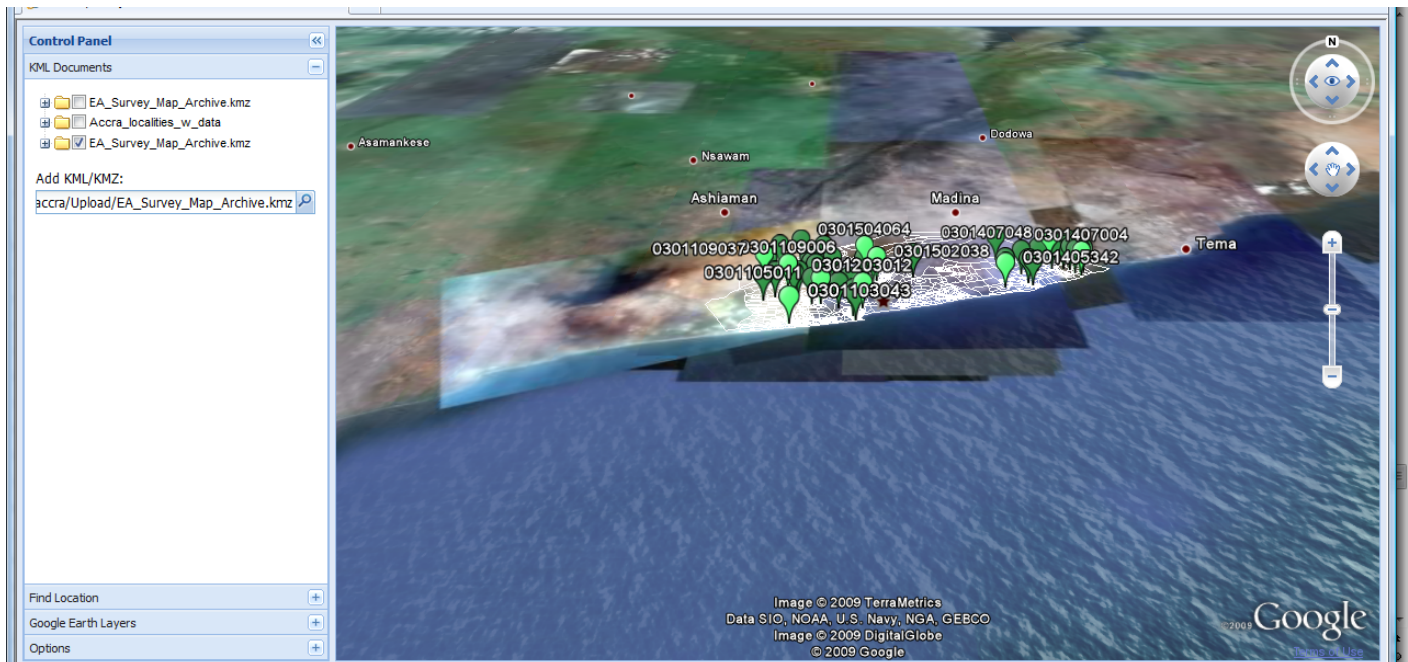
There are two methods to view the kml/kmz files in PGIS in Accra. The first one is to render the files via Google Earth Plug-in. This requires download the plug-in. The other one is download to your local drive and use Google Earth to view the files.

## Google Plug-in (KML)

The steps to view KML/ KMZ files via Google Earth plug-in are easy and clear. (Please see the figure)

The figure consists of two screenshots. The left screenshot shows a web interface with a table titled 'Discourse'. The table has columns for Latitude, Longitude, Writer, Title, Description, and Picture(s). A callout box points to the 'Picture(s)' column with the text 'Copy the path from here'. The right screenshot shows a 'KML Documents' window with a list of files including 'EA\_Survey\_Map\_Archive.kmz', 'Accra\_localities\_w\_data', and 'EA\_Survey\_Map\_Archive.kmz'. A callout box points to the 'Add KML/KMZ' section with the text 'Post the path to here'.

1) **Unlock the pop-up filter.** The KML page is a pop-up page aims to facilitate your usage. You would want it to pop up. 2) Click the discourse you are interested in. 3) **Copy and post** the file path to the page. 4) **Refresh** the page, if you added/ removed different files.



## Layout of KML.html (refresh when you add/ remove any kml/kmz files)

## Google Earth

Click download files in the note section and it will take you to the list of files. Save them in your local disk and then open them Google Earth (visit <http://earth.google.com/> to download it).

[\[To Parent Directory\]](#)

Monday, June 01, 2009 8:41 AM	484913	<a href="#">Accra_localities.kmz</a>
Monday, June 01, 2009 10:14 AM	213379	<a href="#">Accra_submetros.kmz</a>
Monday, June 01, 2009 1:54 AM	201018	<a href="#">Girl_walking_through_Osu_Accra-1.JPG</a>
Tuesday, May 26, 2009 5:26 PM	4096083	<a href="#">Girl_walking_through_Osu_Accra.JPG</a>
Monday, June 01, 2009 2:26 AM	184380	<a href="#">House_Store_in_Osu_Accra.JPG</a>
Sunday, May 17, 2009 2:02 PM	48293	<a href="#">IMG_1059.jpg</a>
Monday, June 01, 2009 10:13 AM	80712	<a href="#">mamobil.jpg</a>
Monday, June 01, 2009 9:08 AM	405013	<a href="#">si_w_leg.kmz</a>
Monday, June 01, 2009 8:27 AM	192971	<a href="#">Street_scene_in_Osu_Accra.JPG</a>

Sample of the list of files.

## Search (by author or key words)

This page is aimed for future usage. The history page will list all the information stored in our database.

You might need to look over more than 100 or 1,000 records for your interested topics. However, it has to be

100% match to the original author. Say you want to find total fertility rate in Osu, but Ray put TFR; then you will find no record. Ongoing search function will be search by latitude and longitude.

**Search**

Writer	Title	Description	Time	Map it
Ray	Picture of Osu	This is a street view of Osu	6/1/2009 8:27:14 AM	<a href="#">Map It</a>
Ray	Localities in Acci	This is a testing page for the kni	6/1/2009 8:41:18 AM	<a href="#">Map It</a>
Ray	Slum index of Ac	This is a testing page for the kni	6/1/2009 9:08:16 AM	<a href="#">Map It</a>

*3 discourse(s) found.*

## How do I reply?

Currently, due to the limitation from API techniques, we can't offer instant update for each discourse. You can just create another discourse. By putting "Re" in your reply title, you can add information about whether the location or if the descriptions are correct or not. It could be right location with wrong picture, or incorrect location for a file.

The Steps are:

- 1) Find your interested discourse.
- 2) Copy the absolute location and post it to
- 3) Fill out all the information in the window.
- 4) In the title part, add Re: and then copy and post the original title.
- 5) Save.

Type in Address or  
Latitude,Longitude

## Contact Us



### SAN DIEGO STATE UNIVERSITY

PGIS in Accra, Ghana is hosted by Department of Geography, San Diego State University. For more information or supports please contact the [team members](#). Thank you.

[Learn more about our project](#)

Contact list of our key persons.

## Project Members List

### Dr. John R. Weeks

Principle Investigator. Email: [john.weeks@sdsu.edu](mailto:john.weeks@sdsu.edu)

### Dr. Douglas A. Stow

Co-principle Investigator. Email: [stow@mail.sdsu.edu](mailto:stow@mail.sdsu.edu)

### Dr. Arthur Getis

Co-principle Investigator. Email: [arthur.getis@sdsu.edu](mailto:arthur.getis@sdsu.edu)

### Dr. Allan Hill

Co-principle Investigator. Email: [ahill@hsph.harvard.edu](mailto:ahill@hsph.harvard.edu)

### Dr. Rosemary Duda

Co-principle Investigator. Email: [click here](#)

### Dr. David Rain

Co-principle Investigator. Email: [david.rain@gwu.edu](mailto:david.rain@gwu.edu)

### Dr. Ryan Engstrom

Co-principle Investigator. Email: [rengstro@gwu.edu](mailto:rengstro@gwu.edu)

[Learn more about the research team](#)

## Notes

Technical difficulties? Contact the [Webmaster](#).

## Log out

**Logged Out.**

You've successfully signed out. See you soon!

See the same information as the figure? Hooray... you made it! Don't forget to log out after your visit. Thanks for your visit.